

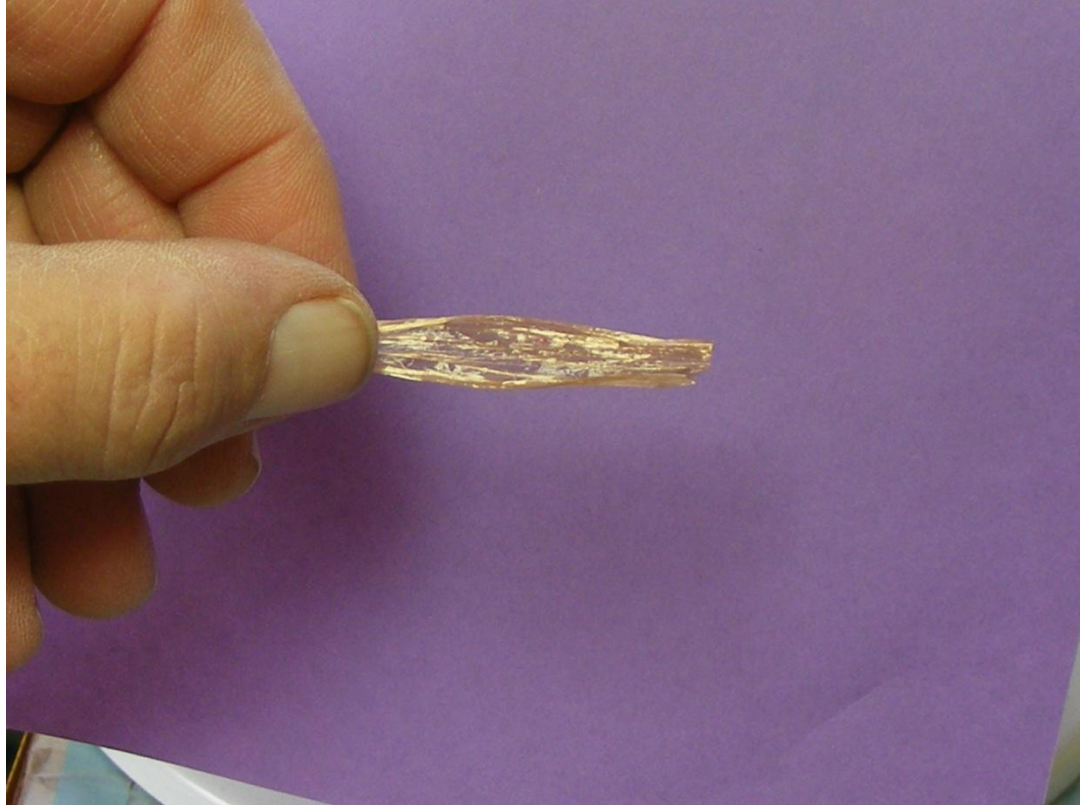
# Real Wing Green Drake

Step by Step

By: Bob / sandfly

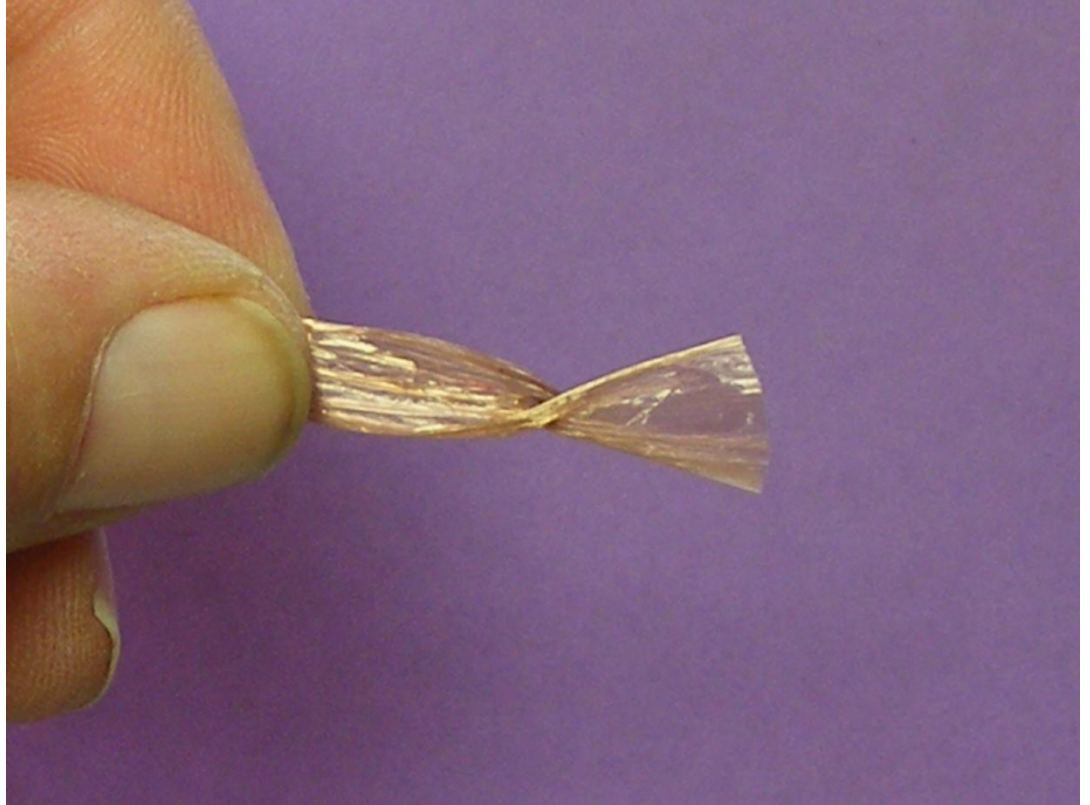
## Preparing the wing

Take a piece of green dyed raffia 2 ½ inches long. (tan is used here for demo) and open it up. Then cut in half length wise. You will end up with two sections of raffia. Each will be used for a pair of wings.



## Wing prep

Then twist the raffia in the center a full 360 degrees. After that fold in half at twist. In this picture it is twisted 180 degrees for you.



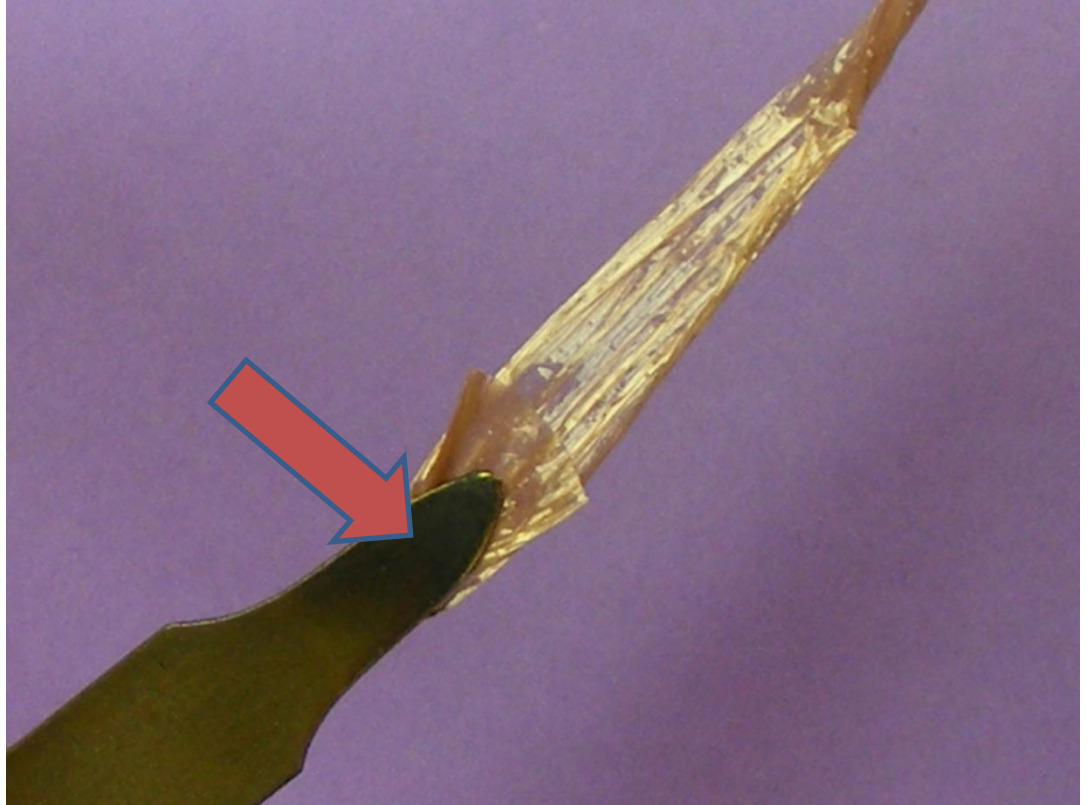
## Wing folded

I like to compress this section so it holds in position.



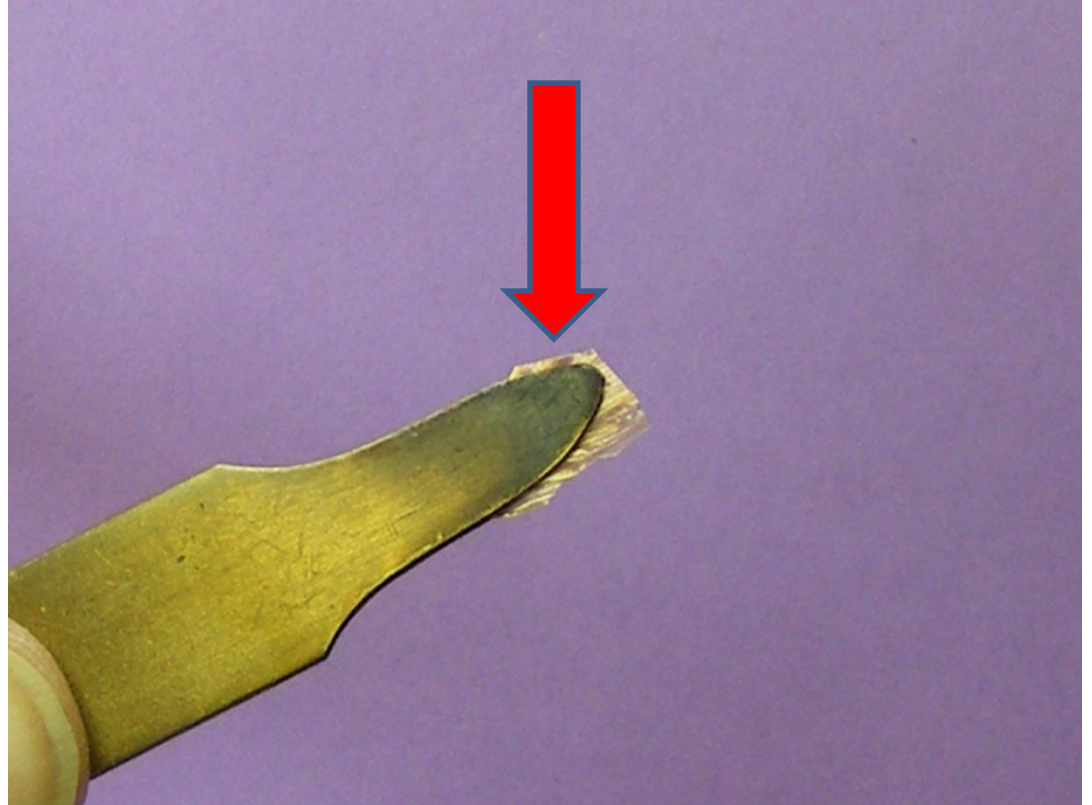
## Wing burner

Position wing burner over raffia so  
twisted part is in the center of burner



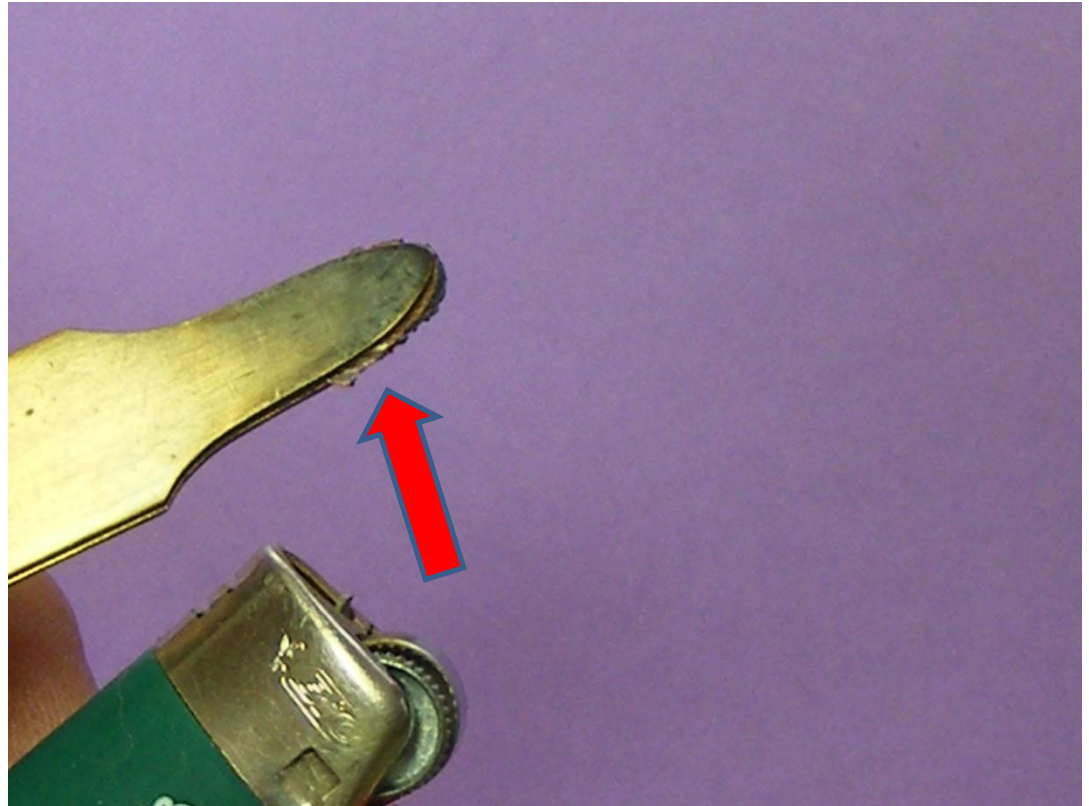
## Wing burner trim

While holding wing burner trim the raffia with your scissors as close as possible to the burner.



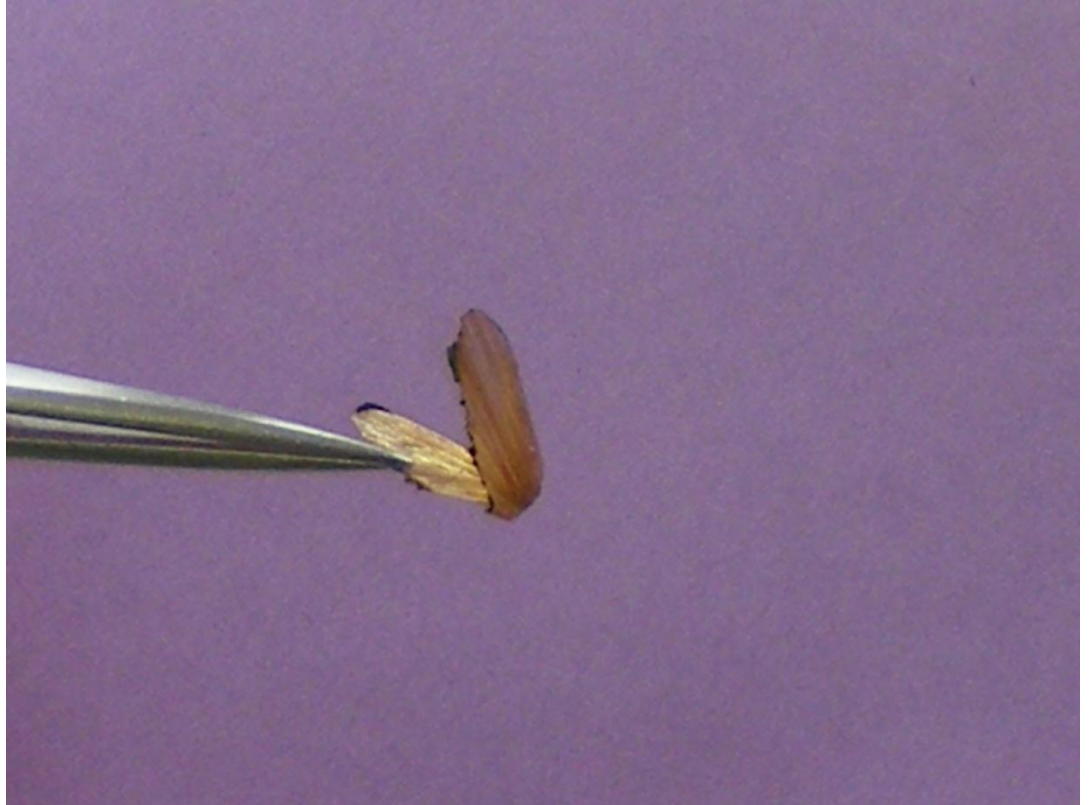
## Wing burning

While still holding burner take a butane lighter and run around edge of burner trimming any excess raffia there. This will give final shape to wing.



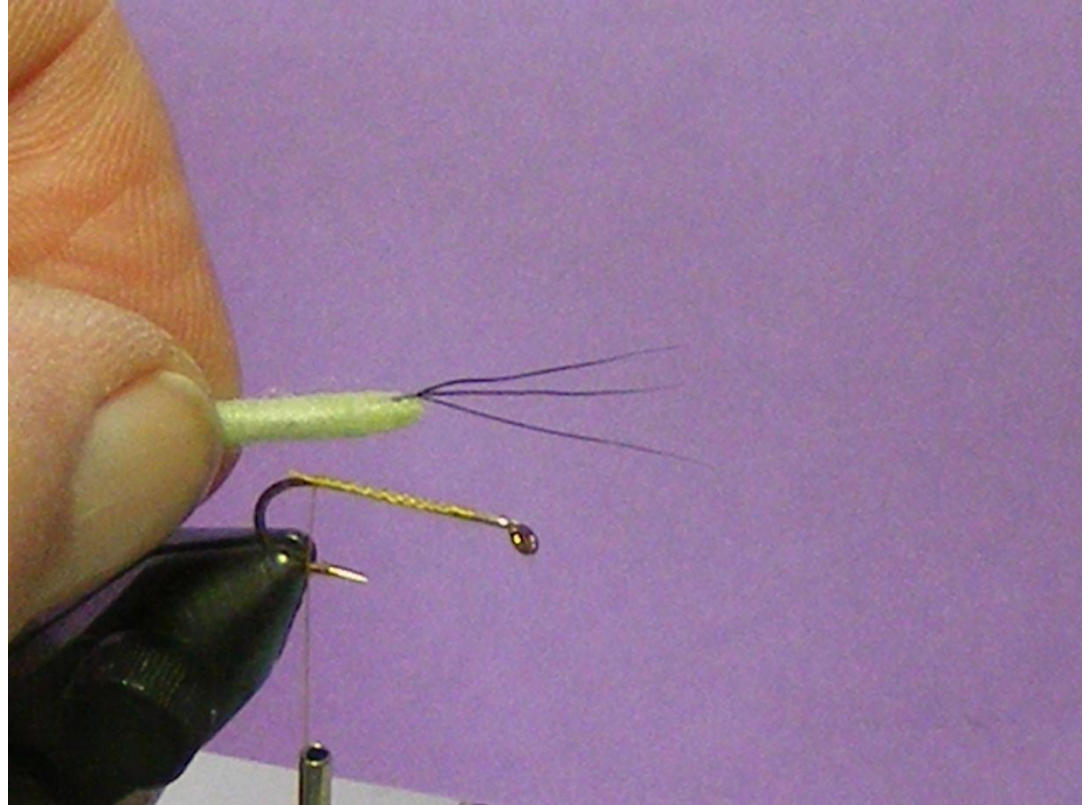
## Wing Finished

Now you can remove the wing from the burner. It should look something like the one in the picture.



## Tying the fly

I tie the fly using a extended body that I built earlier (another presentation) by measuring the body length with hook shank.



## Adding abdomen

Then tie the abdomen on hook shank covering end with thread. You can put a drop of cement to the thread wrap if you like. Tie in should be over hook point.



## Body

I then dub the body half way up hook shank.



## Hackle & Wing

Then tie in your hackle and the wing. Use a figure eight wrap on the wing and one to two turns around the base of wing to secure it. Adding a drop of flexible cement to base at this time will help the wing sit right.



## Hackle and dubbing

Add some dubbing around the wing and in front to finish body off. Then wrap hackle as you would a normal dry fly. I like three wraps behind and two in front of wing. You can add a small amount of thinned goop to the edge of wing to make it durable. Doesn't take much so be careful.



## Finish

Wrap hackle forward and Whip finish the head. Add markings with a permanent marker.

You are done the Real Wing Green Drake !

Bmfs.

